

September 2011 New York City Providers' Job Report

OVERVIEW

- ❖ New York City's unemployment rate was *unchanged* from August at 8.7 percent, though still improved from 9.2 percent one year ago.
- ❖ New York City's unemployment rate is higher than the state's (8.0) but lower than the nation's (9.1).

1-YEAR CHANGES

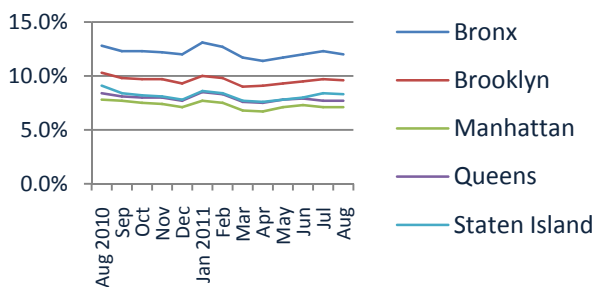
- ❖ New York City's private sector employment increased by 40,100 or 1.3 percent since September 2010.
- ❖ Over the past year, the sectors with the most *job growth* were Educational Services (+18,900), Professional, Scientific, and Technical Services (+10,900), and Accommodation and Food Services (+9,600).
- ❖ The largest *job losses* were in Government (-8,700), Construction and Mining (-5,800), and Other Services (-5,000).
- ❖ The City's over-the-year private sector growth rate (1.3%) was not as strong as either the state's (1.4%) or the nation's (1.7%).

THIS MONTH'S MAJOR TRENDS

- ❖ New York City's private sector employment increased by 16,300 or 0.5 percent since August 2011, well below the 10-year average of 22,500 for this time of year.
- ❖ The worst *job loss* was experienced in the Government sector (-21,000), followed by Administrative and Support and Waste Management (-5,200).
- ❖ The Information sector had a very large gain of 8,100 jobs, largely due to the return of striking Verizon workers. Transportation and Warehousing (+4,500) and Retail Trade (+3,700) also added jobs this month.

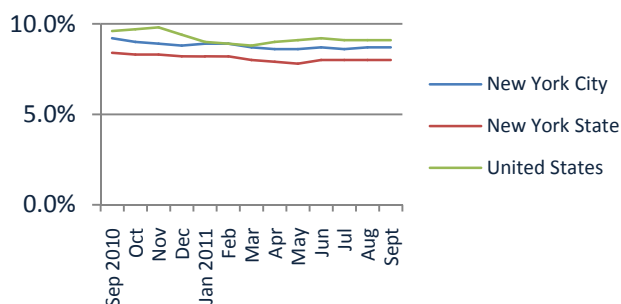
UNEMPLOYMENT RATES

Unemployment Rate by Borough,
Aug 2010 to Aug 2011
not seasonally adjusted



	AUG 2011	AUG 2010
<i>not seasonally adjusted</i>		
Bronx	12.0%	12.8%
Brooklyn	9.6%	10.3%
Manhattan	7.1%	7.8%
Queens	7.7%	8.4%
Staten Island	8.3%	9.1%

NYC, NY State, and the US
seasonally adjusted



	SEPT 2011	SEPT 2010
<i>seasonally adjusted</i>		
NY City	8.7%	9.2%
NY State	8.0%	8.4%
U.S.	9.1%	9.6%

Job Sectors <i>(in descending order according to 1-year growth)</i>	Jobs in 1,000s			Change	
	SEP 2011	AUG 2011	SEP 2010	1 MONTH	1 YEAR
Educational Services	184	172	165	7.2% ↑	11.4% ↑
Professional, Scientific, and Technical Services	330	332	319	-0.6% ↓	3.4% ↑
Accommodation and Food Service	270	268	260	0.8% ↑	3.7% ↑
Finance and Insurance	318	321	313	-0.8% ↓	1.8% ↑
Retail Trade	310	306	304	1.2% ↑	1.8% ↑
Admin and Support and Waste Management	201	206	196	-2.5% ↓	2.3% ↑
Real Estate and Rental and Leasing	121	120	118	0.6% ↑	2.2% ↑
Management of Companies	65	66	63	-1.1% ↓	3.2% ↑
Transportation and Warehousing	104	99	103	4.5% ↑	1.1% ↑
Wholesale Trade	139	138	138	0.9% ↑	0.7% ↑
Utilities	16	16	16	-0.6% ↓	-0.6% ↓
Health Care and Social Assistance	579	579	580	0.0% ↔	-0.1% ↓
Information	163	155	165	5.2% ↑	-1.7% ↓
Arts, Entertainment, and Recreation	63	66	66	-3.5% ↓	-4.7% ↓
Manufacturing	73	74	77	-0.9% ↓	-5.1% ↓
Other Services	155	156	160	-0.5% ↓	-3.1% ↓
Construction and Mining	109	110	114	-1.7% ↓	-5.1% ↓
Government	538	559	546	-3.8% ↓	-1.6% ↓
Goods Producing	182	184	191	-1.4% ↓	-5.1% ↓
Service Providing	3,554	3,556	3,513	-0.1% ↓	1.2% ↑
Private Service Providing	3,017	2,998	2,967	0.6% ↑	1.7% ↑
Subtotal Private	3,198	3,182	3,158	0.5% ↑	1.3% ↑
TOTAL	3,736	3,741	3,704	-0.1% ↓	0.8% ↑

SOURCE | NYCLMIS analysis of New York State Department of Labor, September 2011

Job Gains/Losses by Sector, Sept 2010 to Sept 2011

