



CUNY MAPPING SERVICE

The Mapping Service assists organizations in realizing the geographic and mapping dimensions of their activities, in furtherance of the mission of the CUNY Graduate Center. We primarily engage with foundations, government agencies, businesses, nonprofit organizations, and other CUNY researchers to use spatial information and analysis techniques to develop and execute applied research projects.

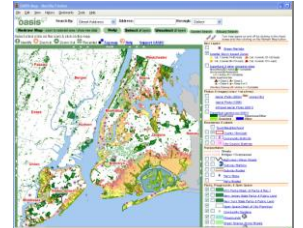
BACKGROUND

Our expertise lies in the use of geographic information systems (GIS) to understand, visualize, and analyze data sets for a variety of urban planning issues including demographic change, land use trends, social service availability, educational needs, public health, and environmental quality. We are part of the Center for Urban Research (CUR) at the City University of New York Graduate Center and help leverage CUR's data analysis and research initiatives, including that of the CUNY Data Service and NYC Labor Market Information Service.

ACTIVITIES

- ❖ Developing and maintaining interactive online mapping applications – including two information-rich sites for the New York region: the **Long Island Index mapping site** and the **Open Accessible Space Information System (OASIS)** partnership.
- ❖ Consulting with groups in other cities engaged in collaborative web-based projects.
- ❖ Using spatial analysis techniques to develop and execute applied research projects on a grant-funded or fee for service basis with government agencies, businesses, and nonprofit organizations – including partnerships with other CUNY institutions and researchers.
- ❖ Authoring or co-authoring articles, papers, reports, and other written or electronic materials related to the work of the Mapping Service.
- ❖ Providing educational services around GIS including workshops, seminars, and continuing education programs.

The Mapping Service also helps support CUR's work including the use of spatial analysis techniques to help CUNY's Central Office advance the mission of the university.



ABOUT THE CENTER FOR URBAN RESEARCH AT THE CITY UNIVERSITY OF NEW YORK

Working with Graduate Center faculty and students, the Center for Urban Research organizes basic research on the critical issues that face New York and other large cities in the U.S. and abroad, collaborates on applied research with public agencies, nonprofit organizations, and other partners, and holds forums for the media, foundations, community organizations and others about urban research at the Graduate Center of the City University of New York.

For more information:

Steven Romalewski, Director • 212-817-2033 • sromalewski@gc.cuny.edu • www.urbanresearch.org
CUNY Mapping Service • CUNY Graduate Center, 365 Fifth Avenue, Room 6202, NY, NY 10016

