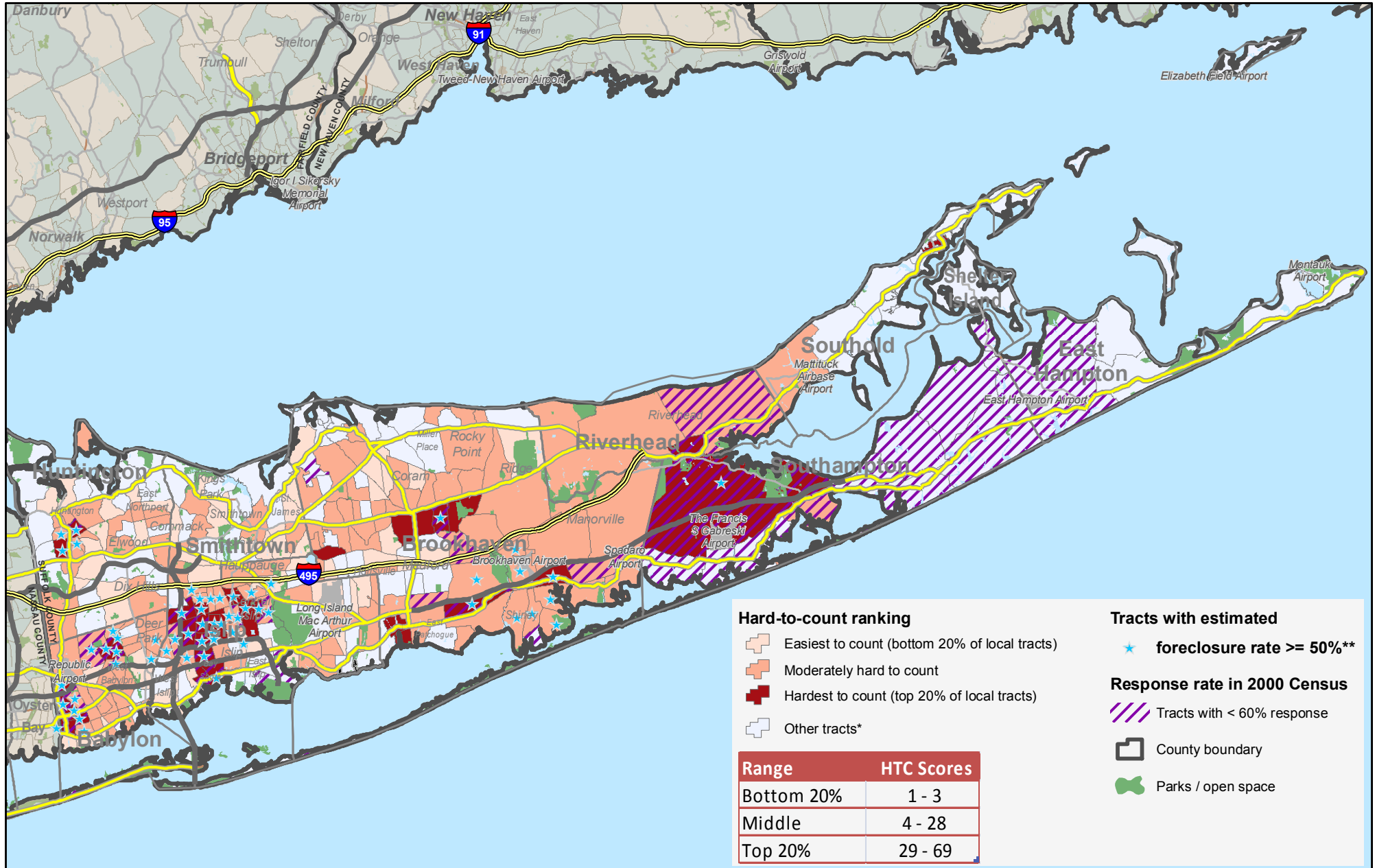


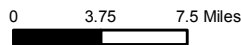
"Hard to count" Census tracts in Suffolk County based on 2000 Census relative to local population characteristics, plus 2000 response rate & 2007-08 foreclosure risk data



*NOTE: "Other tracts" either have < 100 housing units, or population size < 250 , or group quarters $> 50\%$ or $> 35\%$ population age 65+, or where HTC value was 0.

**Foreclosure risk from HUD analysis of # of foreclosure starts b/w 2007 through June 2008 divided by # of mortgages b/w 2004 and 2006 times 100.

Cartography by the Center for Urban Research, CUNY, 2009 (based in part on "ESRI Data & Maps" and ColorBrewer.org).



The Census Bureau describes "hard to count" tracts as areas with the greatest challenges to counting the local population for the upcoming 2010 decennial census. This map highlights the tracts that are hardest to count compared with other tracts within this county. Other areas nationwide might have higher hard-to-count scores based on the Census Bureau's analysis.